

SERIES 7700™

WWW.ACTIVEXRAY.COM



The easiest way to excellent images

- ✓ *Simple “one button” operation*
- ✓ *Easy to move*
- ✓ *ActiveXray.com*

OEC
OEC MEDICAL
SYSTEMS, INC

The Series 7700's "point and shoot" design delivers fast, effective results...



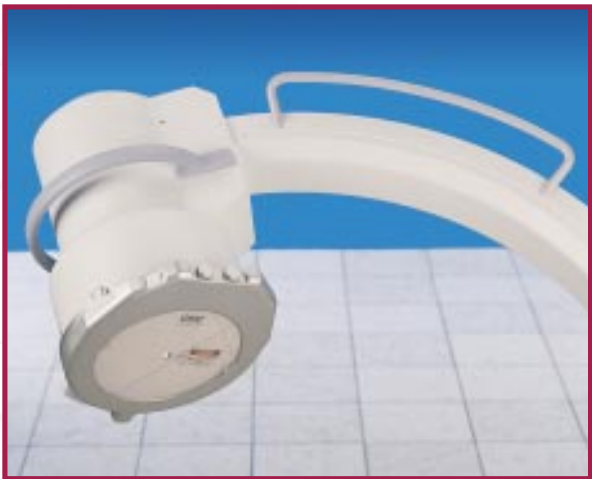
Automatic Image Adjustment

- mA
- kVp
- Camera gain
- Window/level



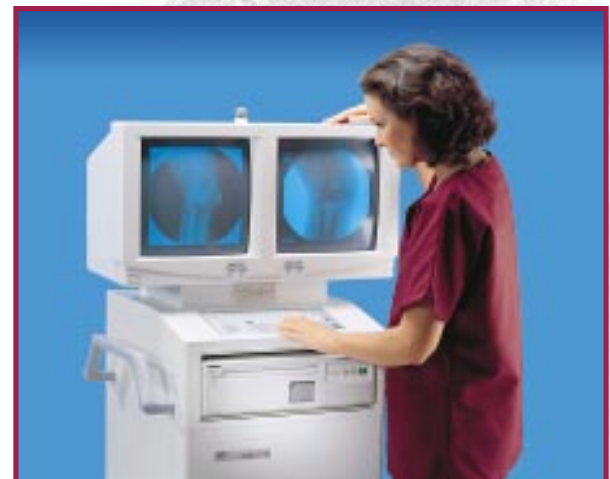
Patient Image Directory

- Recall by patient name
- Search up to 36,000 images
- Thumbnail display
- Rapid access to "digital cine" runs



Removeable Laser Aimer

- Localize anatomy without radiation
- Reduce procedure time
- Guide needle placements
- Improved accuracy in hardware placement
- Quick on/off attachment
- Reduce exposure time/dose



Advanced Digital Imaging

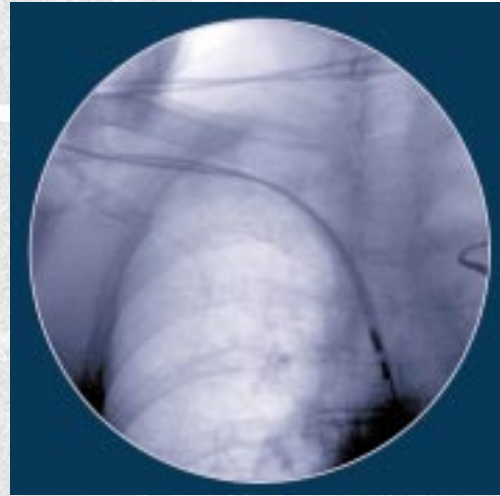
- Noise reduction
- Auto window/level
- Edge enhancement
- Zoom and roam
- Digital storage (static and dynamic)
- Real-time subtraction
- Roadmapping
- Peak opacification

Excellent image quality, where and when you need it...



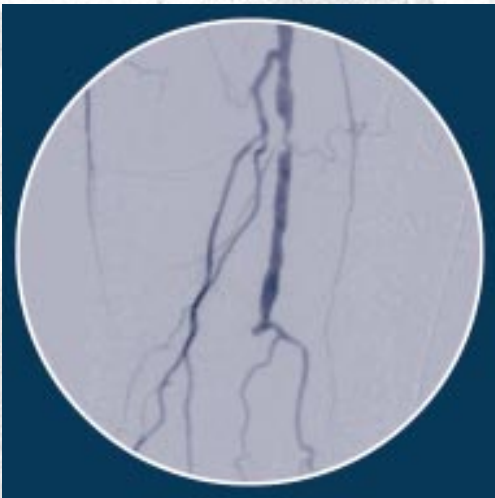
Orthopedic Surgery

- Percutaneous pin placement
- Intramedullary nailing
- Hip fixation



Chest Imaging

- Guide catheter placements
- Pacemaker implants



Vascular

- Angiography
- DSA exams
- Angioplasty
- Stent placements
- Atherectomies



Gastro Intestinal

- Barium studies
- Colonoscopies
- ERCP
- Intraoperative cholangiography

SERIES 7700TM WWW.ACTIVEXRAY.COM

- 41 cm (16") square, flicker free monitors

- Dose area product display (optional)

- 360° image rotation

- Patient specific image management

- 8,000 image storage
– 36,000 optional



- Hard copy options
 - Thermal printer
 - Multiformat camera
 - SVHS VCR

- Removable floppy disk stores up to 5 images

- Digital interface (DICOM 3.0)
[CONTACT ACTIVEXRAY.COM](http://WWW.ACTIVEXRAY.COM)

- *High resolution CCD camera*



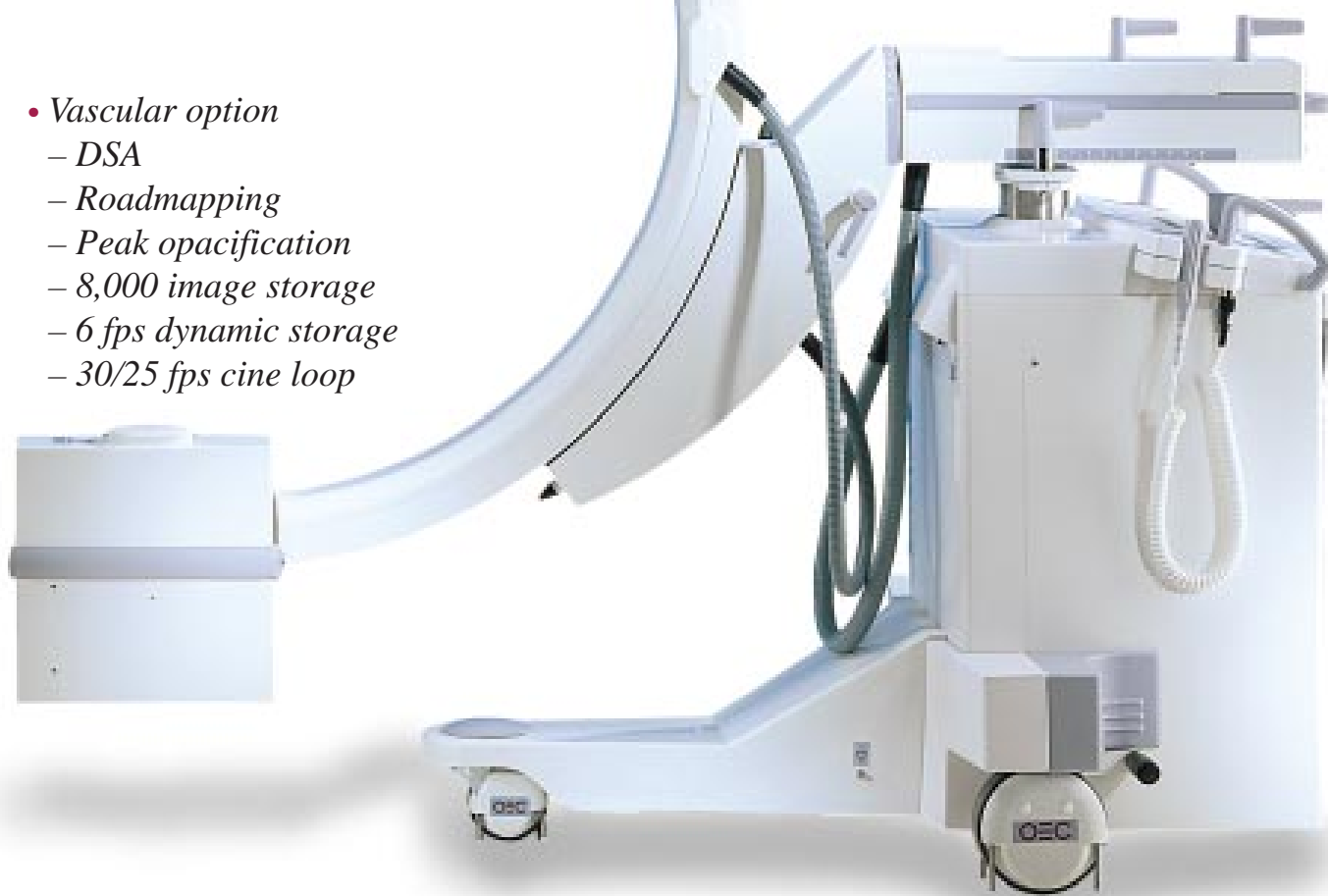
- *23 cm (9") tri-mode image intensifier*

- *Vascular option*
 - DSA
 - Roadmapping
 - Peak opacification
 - 8,000 image storage
 - 6 fps dynamic storage
 - 30/25 fps cine loop



- *Dose reduction features*
 - Pulsed fluoro
 - Pediatric mode
 - Snap shot mode

- *Simple "one button" operation*



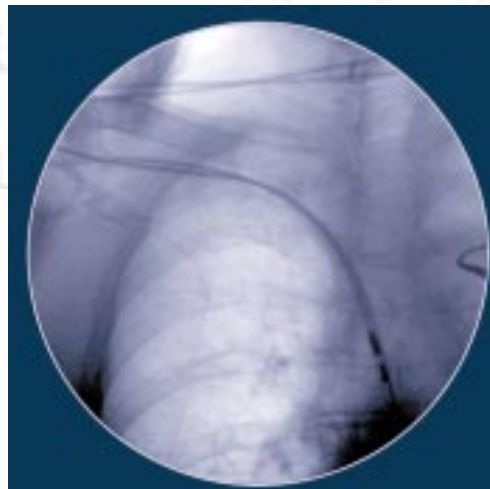
- *Cable pushers*

Operation made easy with one-button user specific modes



Hand Surgery

Reduced scatter through automatic collimation. Ideal for hand, foot, ankle and other extremities



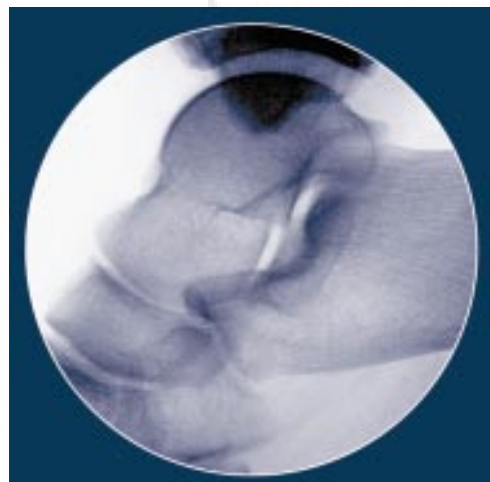
Chest and Thorax

Reduced motion lag in applications such as pacemaker implants, bronchoscopy and catheter placements



Dense Anatomy

Improves dense anatomy images such as the pelvis or spine for general surgery, laparoscopic surgery, urology, and spinal imaging



Reduced Dose

Reduces dose to minimize radiation exposure

Unique, cost effective imaging solutions from a company that understands your needs...



Clinical Support and Training

Our Clinical Applications Specialist will be there when the equipment is installed and will train your staff on system operation.



Service Support

Our worldwide service network provides high quality service in a timely manner. Should you decide to provide your own after-warranty maintenance, OEC can factory train your technical personnel.



Compact 7700

The Compact 7700 has the versatility of a conventional mobile C-arm but in a one-piece design, making it easier to operate in quick "point and shoot" procedures.

- No monitor cart
- Economical
- Great images
- Low dose
- Maneuverable
- Simple operation
- Rapid hard copy